

DMAP REPORT NAME : **2013 Buckingham**

DATE: *20-May-14*

Table 1. DMAP Cooperator and Data Information

						% Data		96%		(162 / 168)	
						% HD		0%		(0 / 164)	
County					Cooperator	New	Objective	QDM	Acres	Tags	
Buckingham	029	1	0002	2013	Jarvis Hunt Club	0	stabilize	yes	914	10	
Buckingham	029	1	0003	2013	J. R. Goodloe Hunt Club	0	stabilize	no	4000	40	
Buckingham	029	1	0005	2013	Watson Hunt Club Buckingham	0	stabilize	no	180	5	
Buckingham	029	1	0011	2013	James River State Park	0	stabilize	no	1000	55	
Buckingham	029	1	0013	2013	Curlee Property	0	stabilize	yes	256	5	
Buckingham	029	1	0019	2013	609 Hunt Club	0	stabilize	yes	2612	40	
Buckingham	029	1	0023	2013	Robertson Property 116	0	stabilize	yes	116	5	
Buckingham	029	1	0025	2013	Phillips Property Buckingham	0	decrease	yes	303	15	
Buckingham	029	1	0028	2013	Ro-Buck Hunt Club	0	stabilize	yes	251	10	
Buckingham	029	1	0031	2013	Real Tree Hunt Club	0	stabilize	yes	752	10	
Buckingham	029	1	0033	2013	Malibu Sportsmen	0	stabilize	yes	2681	25	
Buckingham	029	1	0034	2013	Cerruti Property	-1			212	0	
						Totals			13277	220	
						Square miles			20.7		

Table 2. DMAP Cooperator History

DMAP REPORT NAME : 2013 Buckingham

DATE: 20-May-14

Table 3. Deer Kill Summary

	ANTLERED MALES (with ages)	ANTLERED MALES (without ages)	TOTAL ANTLERED MALES	MALE FAWNS	MALES (no age or antlers)	FEMALES	UNKNOWN SEX	TOTAL KILL
Total	38	1	39	7	0	122 (73%)	0	168
Kill/Square Mile			1.9			5.9		8.1

Table 4. Deer Kill History

SEASON	SQ MI	TOTAL ANTLERED MALES	MALE FAWNS	FEMALES	(%)	UNKNOWN SEX	TOTAL KILL
1992	1.4	8 (5.6)	5	6 (4.2)	32%	0	19 (13.3)
1993	1.4	6 (4.2)	2	10 (7.0)	56%	0	18 (12.6)
1994	1.4	7 (4.9)	1	8 (5.6)	50%	0	16 (11.2)
1995	10.4	21 (2.0)	4	27 (2.6)	52%	0	52 (5.0)
1996	7.4	15 (2.0)	7	29 (3.9)	57%	0	51 (6.9)
1997	7.4	18 (2.4)	1	24 (3.2)	56%	0	43 (5.8)
1998	8.6	15 (1.7)	4	19 (2.2)	50%	0	38 (4.4)
1999	8.6	10 (1.2)	7	14 (1.6)	45%	0	31 (3.6)
2000	9.0	13 (1.4)	5	13 (1.4)	42%	0	31 (3.4)
2001	9.0	15 (1.7)	8	21 (2.3)	48%	0	44 (4.9)
2002	11.2	12 (1.1)	12	39 (3.5)	61%	1	64 (5.7)
2003	15.6	40 (2.6)	14	55 (3.5)	50%	0	109 (7.0)
2004	15.6	39 (2.5)	7	63 (4.1)	56%	1	112 (7.2)
2005	15.7	26 (1.7)	18	60 (3.8)	57%	2	106 (6.7)
2006	15.7	35 (2.2)	7	62 (3.9)	60%	0	104 (6.6)
2007	14.4	28 (2.0)	13	79 (5.5)	66%	0	120 (8.4)
2008	15.1	32 (2.1)	11	74 (4.9)	62%	1	119 (7.9)
2009	15.5	28 (1.8)	14	73 (4.7)	63%	1	116 (7.5)
2010	16.6	28 (1.7)	16	65 (3.9)	60%	0	109 (6.6)
2011	20.0	39 (1.9)	19	53 (2.6)	48%	0	111 (5.5)
2012	20.2	41 (2.0)	18	57 (2.8)	49%	0	116 (5.7)
2013	20.7	39 (1.9)	7	122 (5.9)	73%	0	168 (8.1)

DATE: 20-May-14

Figure 1. Deer Kill History

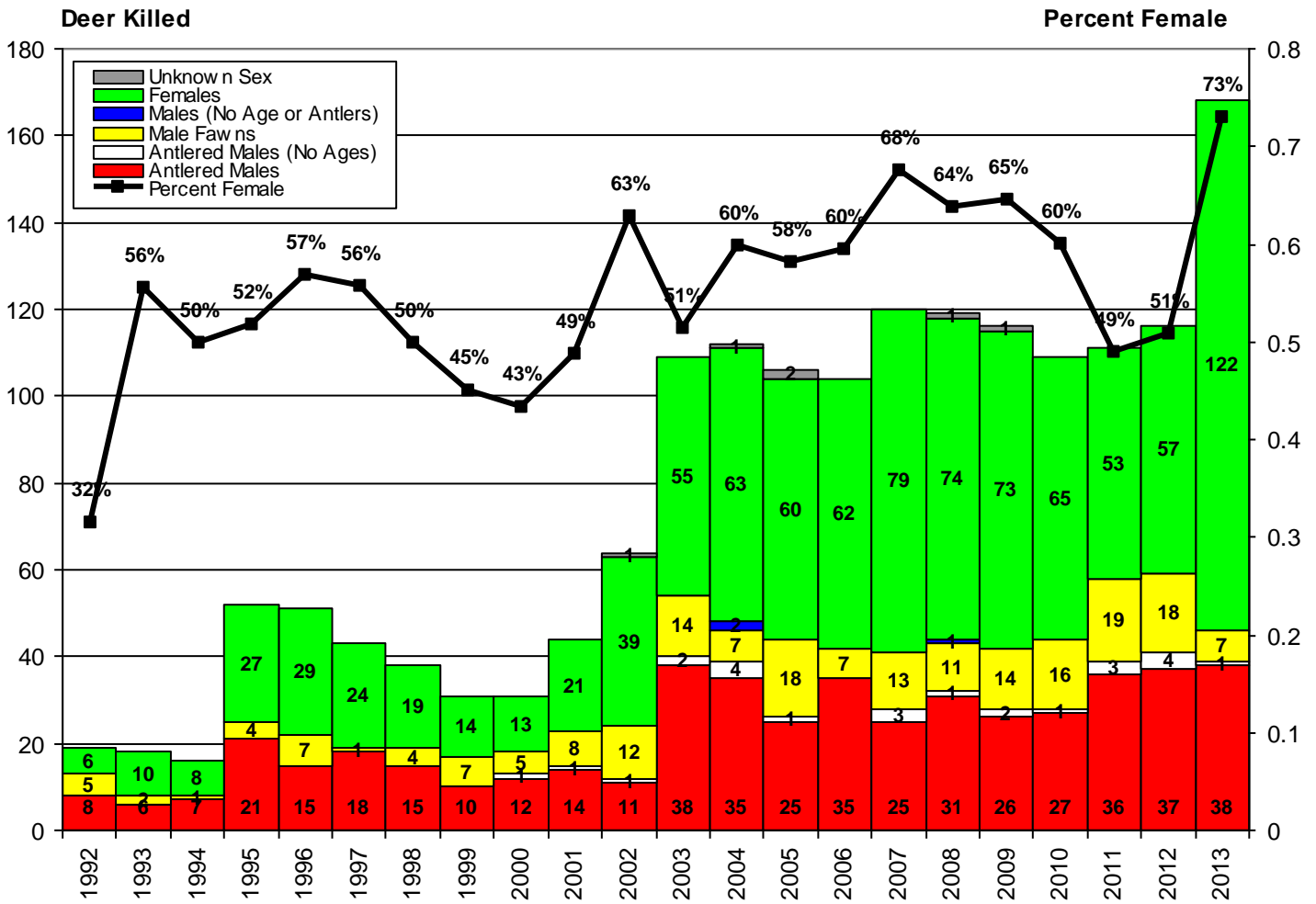


Table 5. Deer Kill Age Distribution

AGE	MALE		FEMALE		TOTAL	
	No.	(%)	No.	(%)	No.	(%)
0 = Fawns	7	16%	35	30%	42	26%
1 = Yearlings	16	36%	32	27%	48	30%
2 = 2-1/2 Year-olds	17	38%	18	15%	35	22%
3 = 3-1/2 Year-olds	4	9%	17	15%	21	13%
4 = 4-1/2 Year-olds	0	0%	8	7%	8	5%
5 = 5-1/2 Year-olds	1	2%	5	4%	6	4%
6 = 6-1/2 Year-olds	0	0%	2	2%	2	1%
7 = 7-1/2 Year-olds	0	0%	0	0%	0	0%
8 = >=8-1/2 Year-olds	0	0%	0	0%	0	0%
Totals	45	100%	117	100%	162	100%

Note: The fawn per yearling and adult female ratio (FDR) is 0.51 (42 / 82)

Figure 2. Female Deer Kill by Age Class By Year (including female fawns)

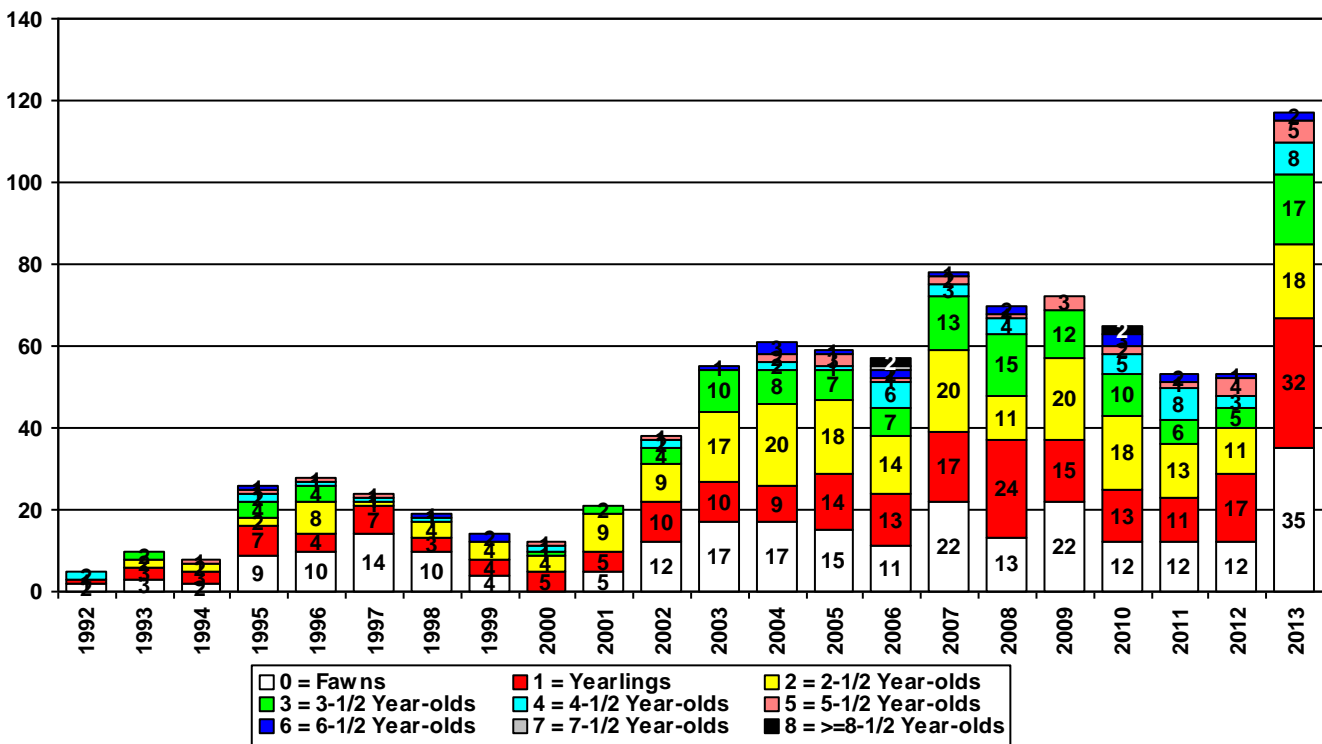
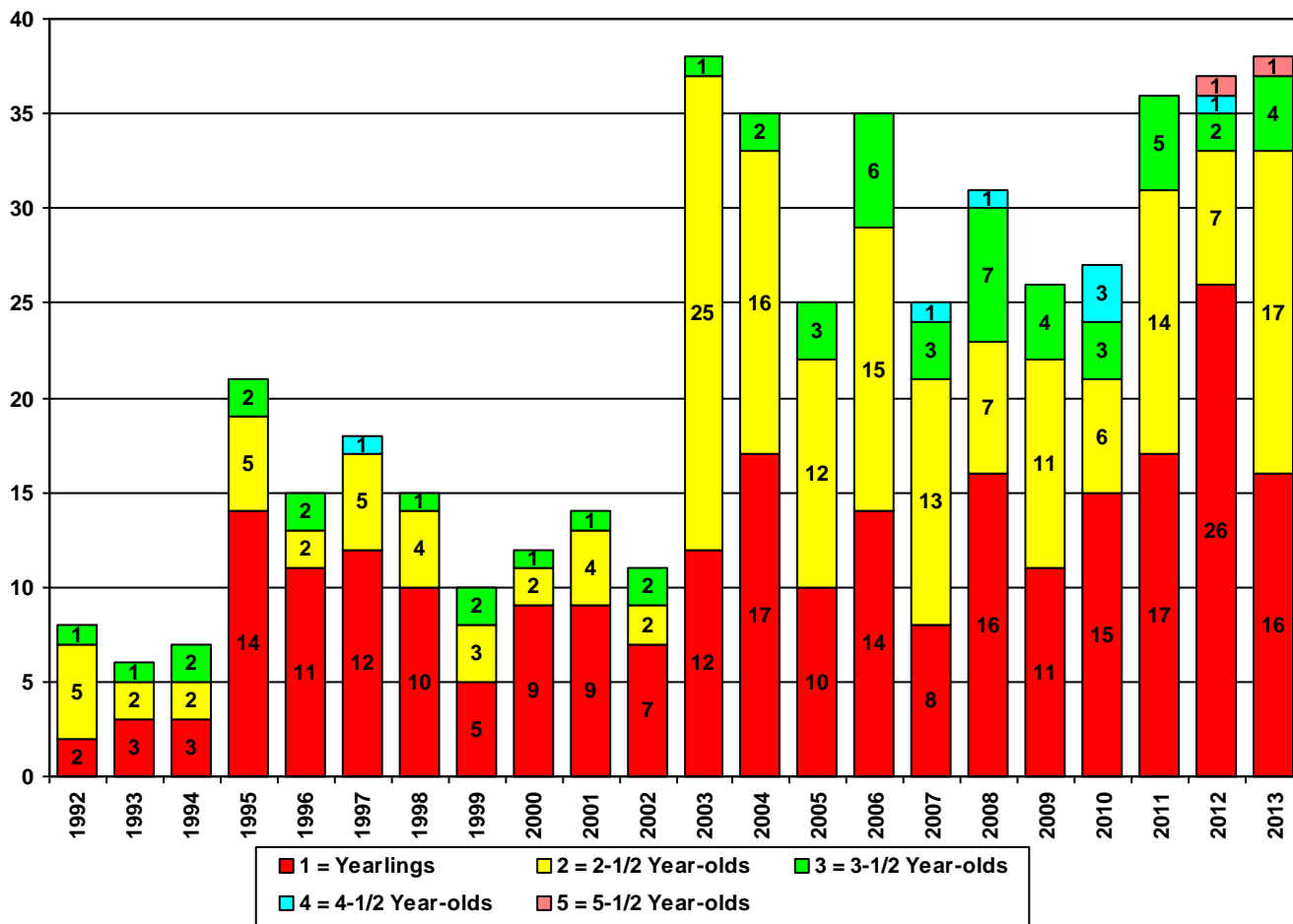


Figure 3. Yearling and Adult Male Deer Kill by Age Class by Year (male fawns not included)



DATE: 20-May-14

Table 6. Statistics for Females

AGE	DRESSED WEIGHTS		LACTATION RATES		
	Avg.	No.	Percent	No.	
0 = Fawns	43	35			
1 = Yearlings	72	32	28%	(9 /	32)
2 = 2-1/2 Year-olds	78	18	24%	(4 /	17)
3 = >=3-1/2 Year-olds	78	32	26%	(8 /	31)

Table 7. Statistics for Females History

SEASON	***AVERAGE DRESSED CARCASS WEIGHT***			*****LACTATION RATES*****			FAWN PER DOE RATIO
	FEMALE FAWNS	YEARLING FEMALES	ADULT FEMALES	YEARLING FEMALES	2-1/2 FEMALES	>=3-1/2 FEMALES	
1992	37 (2)	99 (1)	99 (2)	100% (1 / 1)	(/)	100% (2 / 2)	2.33 (7 / 3)
1993	51 (3)	79 (3)	85 (4)	100% (3 / 3)	100% (2 / 2)	100% (2 / 2)	0.71 (5 / 7)
1994	38 (2)	84 (2)	79 (3)	67% (2 / 3)	(/ 2)	(/ 1)	0.50 (3 / 6)
1995	35 (9)	65 (7)	79 (10)	29% (2 / 7)	100% (2 / 2)	63% (5 / 8)	0.76 (13 / 17)
1996	38 (10)	73 (4)	75 (14)	25% (1 / 4)	63% (5 / 8)	17% (1 / 6)	0.94 (17 / 18)
1997	44 (14)	69 (7)	84 (3)	43% (3 / 7)	(/ 1)	100% (2 / 2)	1.50 (15 / 10)
1998	40 (10)	69 (3)	70 (6)	67% (2 / 3)	75% (3 / 4)	(/ 2)	1.56 (14 / 9)
1999	39 (4)	69 (4)	75 (6)	(/ 4)	100% (3 / 3)	50% (1 / 2)	1.10 (11 / 10)
2000	0 (0)	69 (5)	76 (7)	60% (3 / 5)	50% (2 / 4)	100% (3 / 3)	0.42 (5 / 12)
2001	38 (5)	63 (5)	65 (11)	20% (1 / 5)	44% (4 / 9)	100% (2 / 2)	0.81 (13 / 16)
2002	39 (12)	66 (9)	78 (16)	11% (1 / 9)	56% (5 / 9)	29% (2 / 7)	0.96 (25 / 26)
2003	44 (17)	66 (10)	72 (28)	20% (2 / 10)	56% (9 / 16)	36% (4 / 11)	0.82 (31 / 38)
2004	41 (17)	63 (9)	77 (35)	33% (3 / 9)	45% (9 / 20)	57% (8 / 14)	0.57 (25 / 44)
2005	42 (15)	67 (14)	71 (30)	36% (5 / 14)	56% (10 / 18)	58% (7 / 12)	0.80 (35 / 44)
2006	43 (11)	62 (13)	77 (33)	(/ 13)	64% (9 / 14)	37% (7 / 19)	0.39 (18 / 46)
2007	37 (22)	65 (17)	73 (39)	(/ 17)	35% (7 / 20)	37% (7 / 19)	0.63 (35 / 56)
2008	46 (12)	69 (24)	77 (33)	9% (2 / 23)	45% (5 / 11)	41% (9 / 22)	0.44 (25 / 57)
2009	43 (22)	72 (15)	75 (35)	7% (1 / 15)	50% (10 / 20)	47% (7 / 15)	0.74 (37 / 50)
2010	47 (12)	68 (13)	74 (40)	(/ 13)	22% (4 / 18)	45% (10 / 22)	0.53 (28 / 53)
2011	44 (12)	72 (11)	78 (30)	18% (2 / 11)	30% (3 / 10)	29% (5 / 17)	0.76 (31 / 41)
2012	46 (11)	73 (17)	80 (24)	29% (5 / 17)	45% (5 / 11)	33% (4 / 12)	0.73 (30 / 41)
2013	43 (35)	72 (32)	78 (49)	28% (9 / 32)	24% (4 / 17)	26% (8 / 31)	0.51 (42 / 82)

Figure 4. Female Average Dressed Carcass Weights

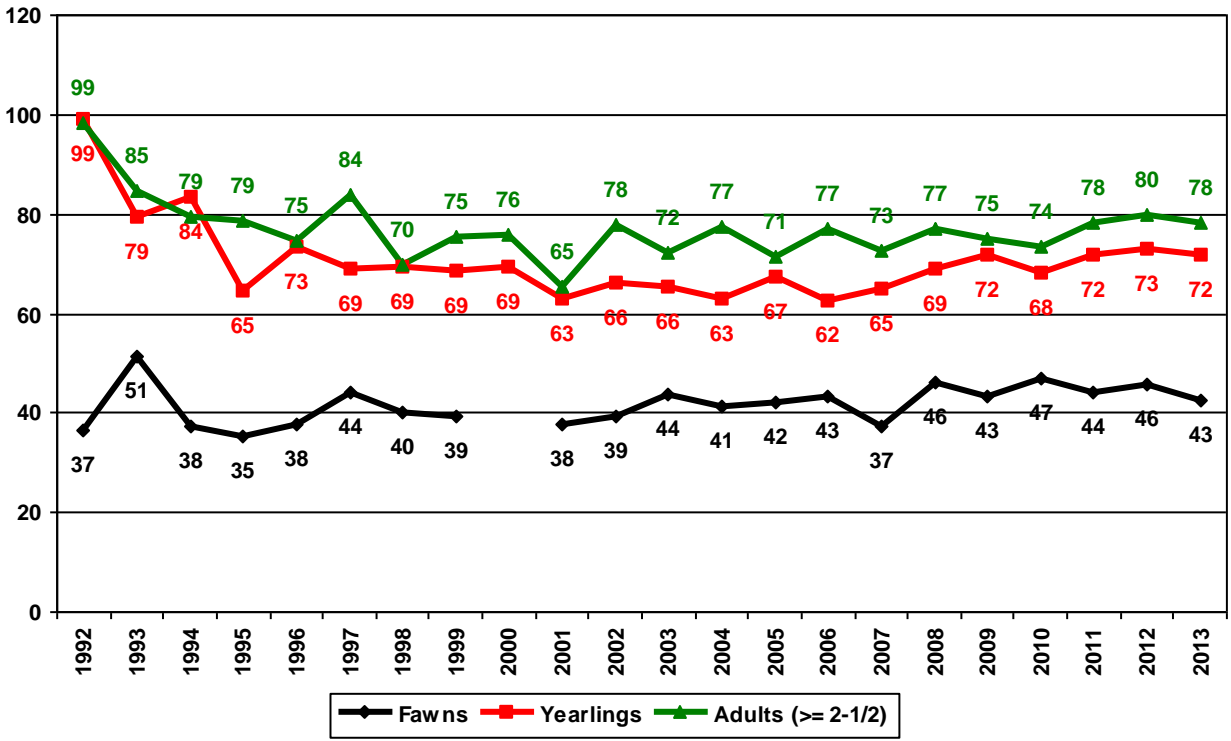


Figure 5. Female Lactation Rates

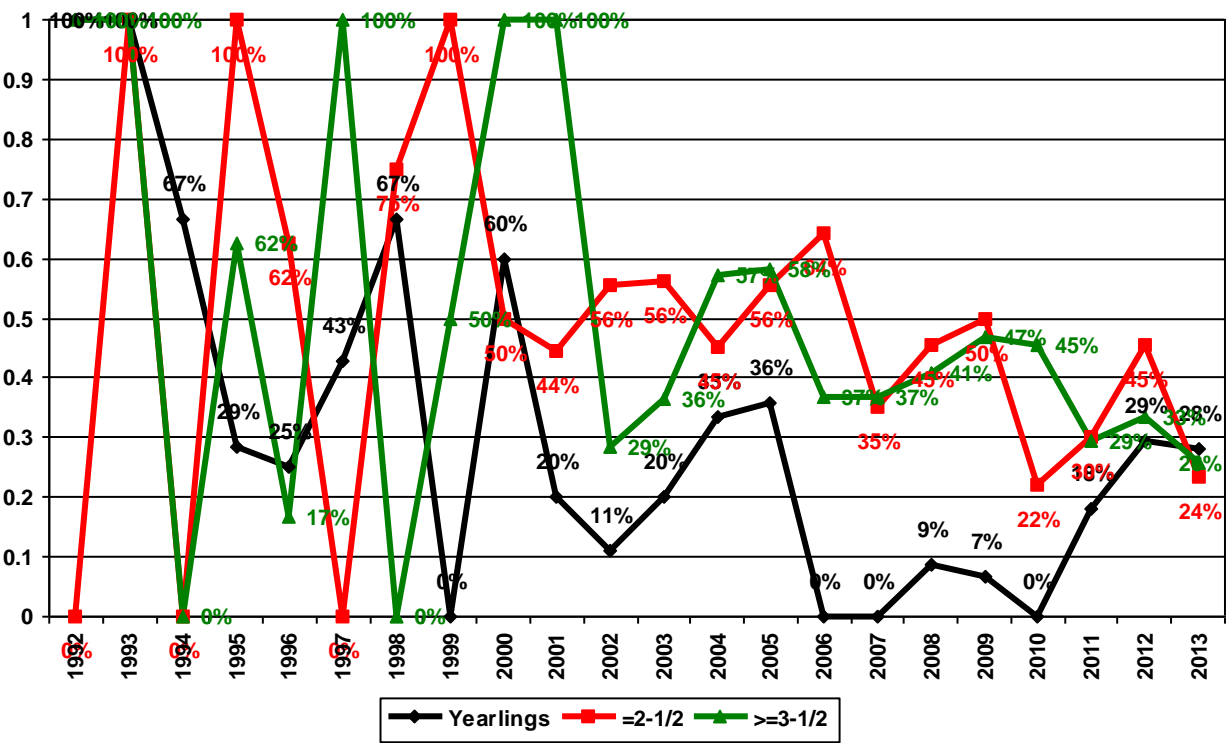
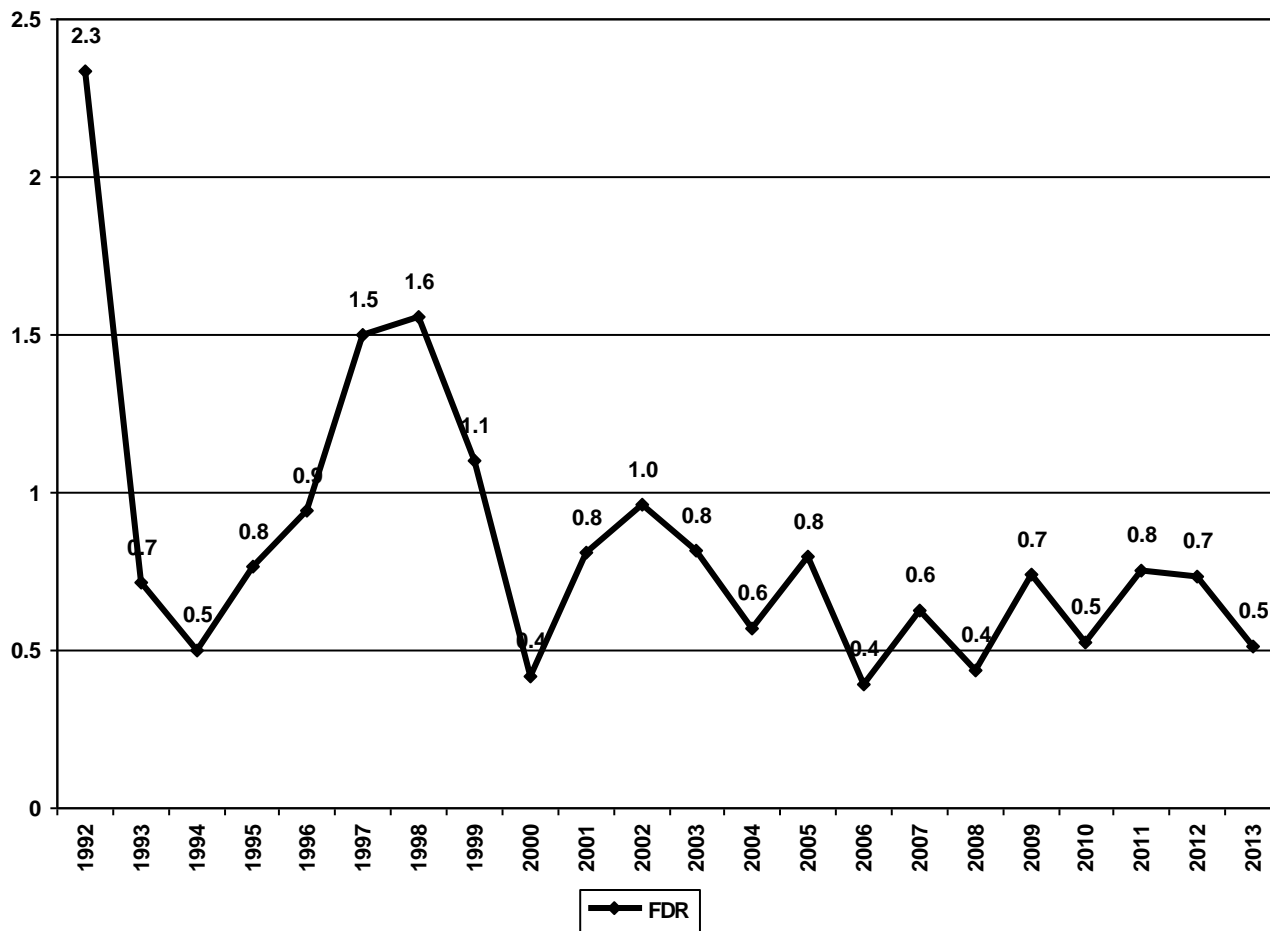


Figure 6. Fawn Per Doe Ratio (FDR)



DATE: 20-May-14

Table 8. Statistics for Males

AGE	DRESSED WEIGHT		ANTLER POINTS		BEAM DIAMETER		OUTSIDE SPREAD	
	Avg.	No.	Avg.	No.	Avg.	No.	Avg.	No.
0 = Fawns	48	7						
1 = Yearlings	85	16	4.2	15	18.8	15	9.9	14
2 = 2-1/2 Year-olds	102	17	7.4	16	25.5	17	14.3	17
3 = >=3-1/2 Year-olds	117	5	8.6	5	30.3	4	18.2	5

Note: The percent yearling males in the adult antlered buck kill was 42% (16 / 38)

Table 9. Statistics for Males History

*****AVERAGE DRESSED CARCASS WEIGHT*****					
	MALE FAWNS	YEARLING MALES	2 YEAR-OLD MALES	>=3 YEAR-OLD MALES	% YEARLING MALES
1992	35 (5)	101 (2)	116 (5)	139 (1)	25% (2 / 8)
1993	47 (2)	105 (3)	100 (2)	116 (1)	50% (3 / 6)
1994	42 (1)	72 (3)	91 (1)	120 (2)	43% (3 / 7)
1995	35 (4)	88 (14)	102 (5)	121 (2)	67% (14 / 21)
1996	42 (7)	79 (11)	83 (2)	108 (2)	73% (11 / 15)
1997	50 (1)	75 (12)	98 (5)	113 (1)	67% (12 / 18)
1998	53 (4)	76 (10)	109 (4)	89 (1)	67% (10 / 15)
1999	46 (7)	74 (5)	86 (3)	95 (2)	50% (5 / 10)
2000	45 (5)	80 (9)	93 (2)	123 (1)	75% (9 / 12)
2001	42 (8)	85 (9)	107 (4)	126 (1)	64% (9 / 14)
2002	45 (12)	83 (7)	95 (2)	104 (2)	64% (7 / 11)
2003	46 (14)	80 (12)	103 (25)	122 (1)	32% (12 / 38)
2004	45 (7)	80 (17)	103 (16)	110 (2)	49% (17 / 35)
2005	46 (18)	78 (10)	100 (12)	105 (3)	40% (10 / 25)
2006	48 (7)	71 (14)	100 (14)	108 (6)	40% (14 / 35)
2007	44 (13)	79 (8)	103 (13)	92 (4)	32% (8 / 25)
2008	44 (11)	81 (16)	99 (7)	110 (8)	52% (16 / 31)
2009	48 (14)	88 (11)	103 (11)	113 (4)	42% (11 / 26)
2010	48 (16)	94 (15)	100 (6)	107 (6)	56% (15 / 27)
2011	51 (19)	85 (17)	104 (14)	110 (5)	47% (17 / 36)
2012	48 (18)	83 (26)	106 (7)	121 (4)	70% (26 / 37)
2013	48 (7)	85 (16)	102 (17)	117 (5)	42% (16 / 38)

Figure 7. Male Average Dressed Carcass Weights

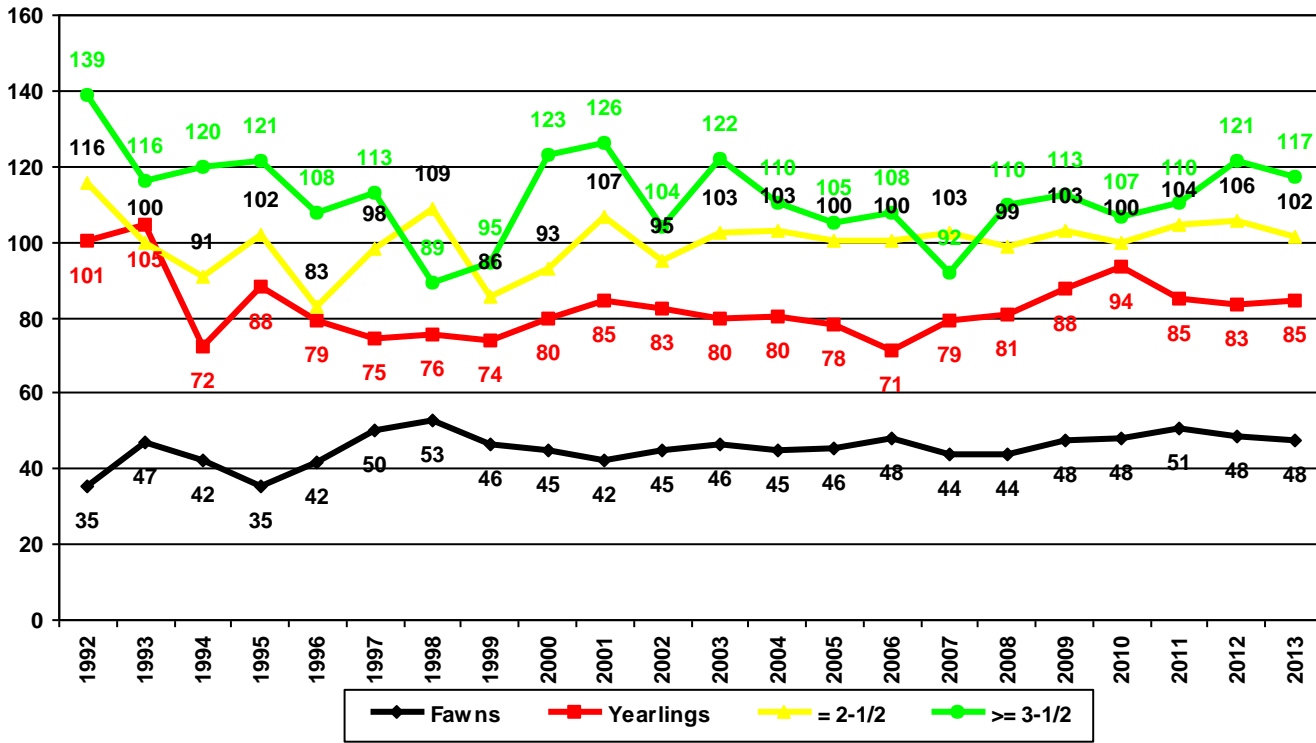


Figure 8. Adult Male Age Structure

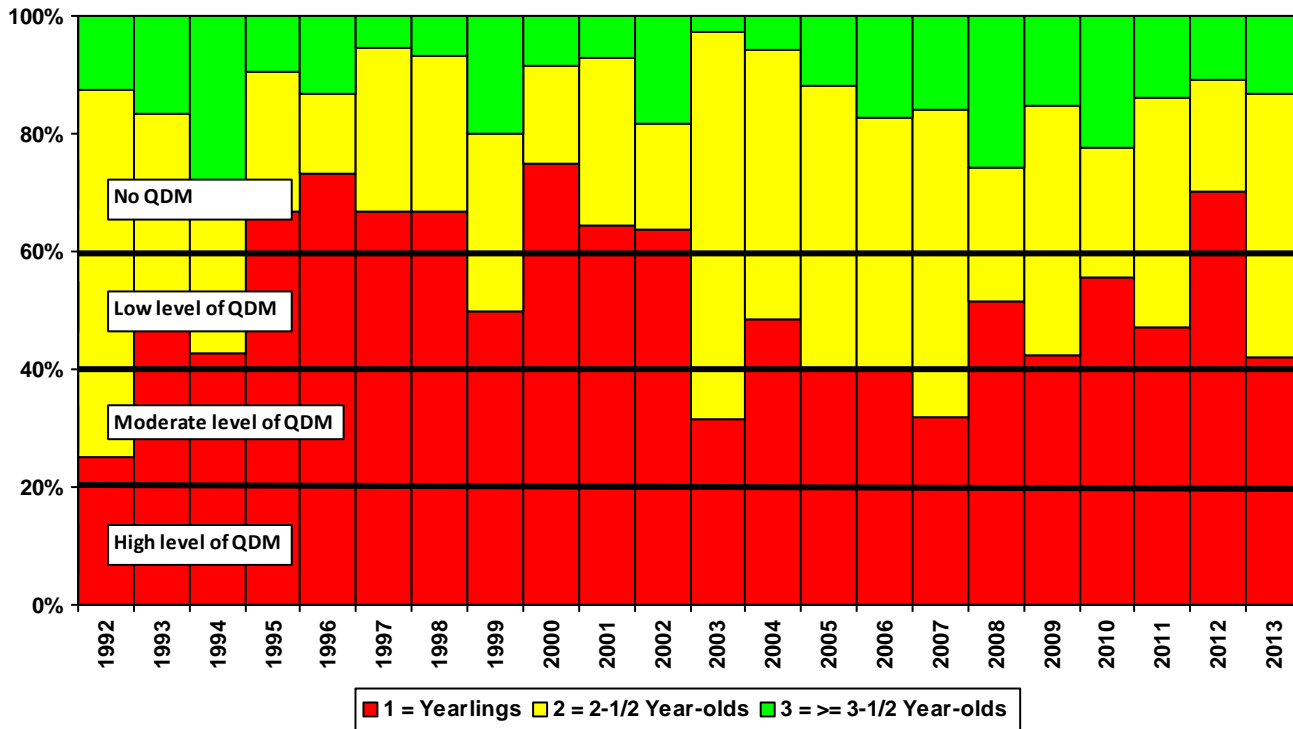


Table 10. Average Antler Characteristics For 1-1/2 Year-old Males (Yearlings).

Season	Number of Antler Points	Antler Beam Diameter (mm)	Outside Antler Spread (in)
1992	3.0 (2)	20.5 (2)	(0)
1993	5.3 (3)	22.3 (3)	(0)
1994	2.0 (3)	17.7 (3)	(0)
1995	4.8 (13)	17.6 (13)	(0)
1996	3.8 (10)	17.0 (10)	(0)
1997	3.0 (8)	17.4 (8)	(0)
1998	3.9 (10)	15.9 (10)	(0)
1999	4.8 (5)	15.4 (5)	(0)
2000	4.1 (8)	18.4 (8)	8.4 (9)
2001	4.8 (9)	21.1 (9)	9.6 (9)
2002	3.7 (7)	20.6 (7)	9.0 (7)
2003	4.5 (12)	18.5 (11)	9.6 (11)
2004	3.9 (16)	15.5 (14)	7.3 (15)
2005	4.6 (10)	15.0 (10)	9.1 (10)
2006	4.1 (11)	18.3 (10)	9.0 (11)
2007	5.8 (8)	19.9 (7)	8.3 (7)
2008	4.5 (15)	19.1 (10)	10.7 (13)
2009	3.8 (8)	14.1 (8)	8.9 (8)
2010	5.1 (15)	18.1 (14)	9.7 (15)
2011	4.9 (17)	18.8 (17)	9.4 (16)
2012	5.3 (25)	20.3 (23)	11.0 (24)
2013	4.2 (15)	18.8 (15)	9.9 (14)

Figure 9. Average Antler Characteristics For 1-1/2 Year-old Males (Yearlings).

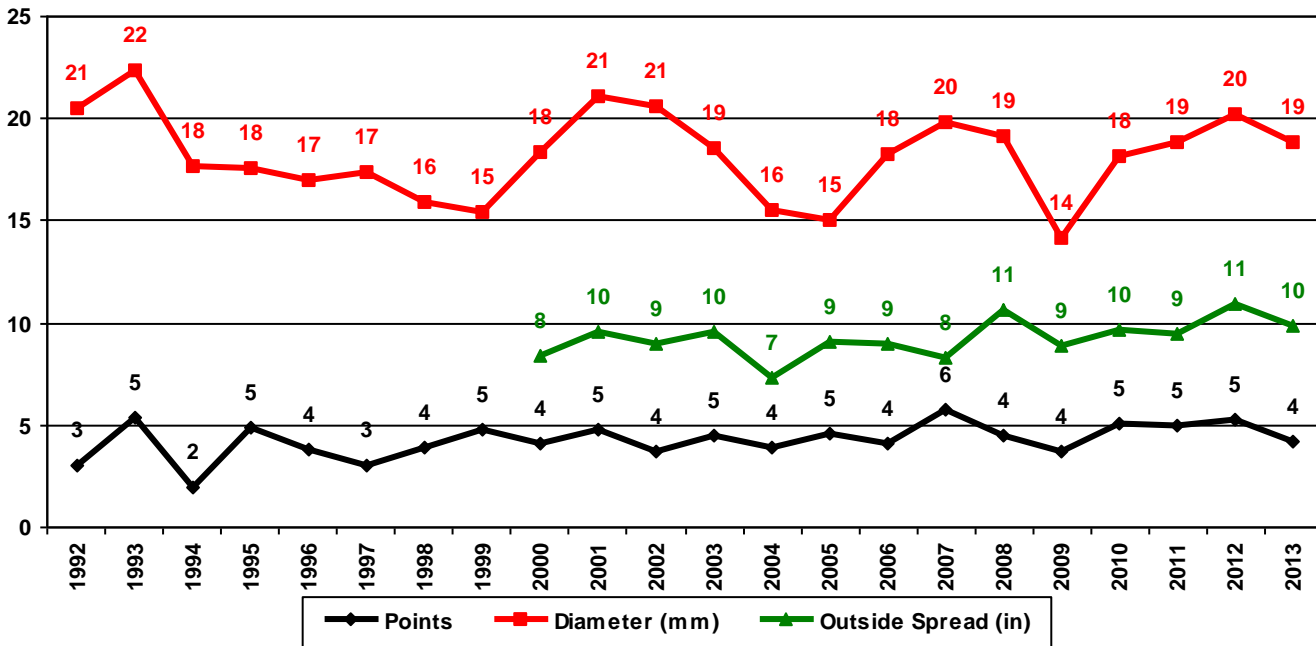


Table 11. Average Antler Characteristics For 2-1/2 Year-old Males.

Season	Number of Antler Points	Antler Beam Diameter (mm)	Outside Antler Spread (in)
1992	6.6 (5)	27.6 (5)	(0)
1993	5.5 (2)	24.0 (2)	(0)
1994	4.0 (2)	21.0 (2)	(0)
1995	7.8 (5)	23.8 (5)	(0)
1996	3.0 (2)	16.0 (2)	(0)
1997	8.2 (5)	30.0 (5)	(0)
1998	6.3 (4)	29.3 (4)	(0)
1999	7.5 (2)	18.7 (3)	(0)
2000	8.0 (2)	26.0 (2)	12.3 (2)
2001	6.8 (4)	29.3 (4)	14.9 (4)
2002	8.5 (2)	25.5 (2)	13.6 (2)
2003	6.7 (25)	26.2 (24)	13.9 (25)
2004	6.3 (16)	23.6 (11)	14.5 (16)
2005	7.1 (12)	23.8 (11)	14.5 (12)
2006	7.6 (15)	25.2 (15)	15.2 (15)
2007	6.9 (12)	24.3 (6)	14.3 (12)
2008	5.4 (7)	22.3 (7)	13.1 (7)
2009	7.2 (11)	28.1 (8)	15.6 (10)
2010	7.0 (6)	26.8 (5)	14.3 (6)
2011	7.6 (14)	24.8 (13)	15.7 (14)
2012	6.7 (7)	26.0 (5)	14.9 (7)
2013	7.4 (16)	25.5 (17)	14.3 (17)

Figure 10. Average Antler Characteristics For 2-1/2 Year-old Males.

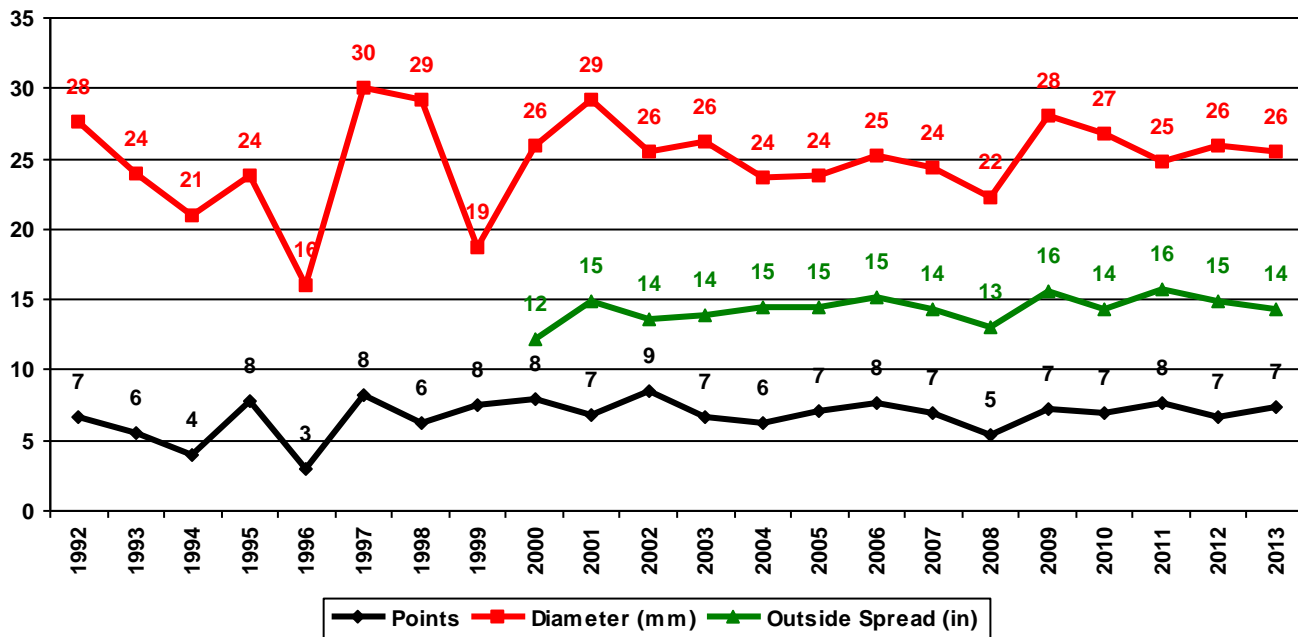


Table 12. Average Antler Characteristics For Males Greater Than Or Equal to 3-1/2 Years Of Age.

Season	Number of Antler Points	Antler Beam Diameter (mm)	Outside Antler Spread (in)
1992	8.0 (1)	34.0 (1)	(0)
1993	7.0 (1)	34.0 (1)	(0)
1994	6.5 (2)	30.0 (2)	(0)
1995	10.5 (2)	33.0 (2)	(0)
1996	7.0 (2)	30.0 (2)	(0)
1997	8.0 (1)	34.0 (1)	(0)
1998	8.0 (1)	22.0 (1)	(0)
1999	9.0 (2)	29.0 (2)	(0)
2000	11.0 (1)	31.0 (1)	17.3 (1)
2001	7.0 (1)	34.0 (1)	18.1 (1)
2002	6.5 (2)	28.0 (2)	16.4 (2)
2003	5.0 (1)	31.0 (1)	12.0 (1)
2004	6.5 (2)	27.5 (2)	13.9 (2)
2005	6.0 (3)	26.0 (3)	14.5 (3)
2006	7.5 (6)	30.0 (6)	16.6 (6)
2007	7.5 (4)	30.0 (4)	16.9 (4)
2008	9.0 (8)	27.9 (8)	17.2 (8)
2009	6.8 (4)	29.7 (3)	15.4 (4)
2010	7.5 (6)	26.3 (6)	15.1 (6)
2011	6.4 (5)	24.4 (5)	14.8 (4)
2012	7.8 (4)	32.0 (4)	17.2 (4)
2013	8.6 (5)	30.3 (4)	18.2 (5)

Figure 11. Average Antler Characteristics For Males Greater Than Or Equal to 3-1/2 Years Of Age.

